

CAREER INSIGHTS

July 2008

PRESIDENTS MESSAGE

INSIDE THIS ISSUE:

Member News	2
Birthday/ Anniversary	2
WU Student Chapter	3
Chapter Dues	3
Member Information	4
Scholarship Information	5
Minutes/ treasurer	6
Contact Information	7

CHAPTER MEETINGS:

- July 1
Executive Board
12 Noon
YWCA
- July 15
5:00 p.m.
Buttercups & Daisies
- August 5
Executive Board
12 Noon
YWCA
- August 19
Meeting
11:45 a.m.
YWCA

Greetings!

I cannot believe that almost a year ago I was thinking to myself, "What in the world have I done!" I had no idea how to conduct a chapter meeting, how to talk into a microphone, how to run a board meeting, and especially, how to talk in front of a group of people. Boy was I scared!!

But I was especially lucky. I was a member of Career Chapter and was so very fortunate to have the support of everyone. I have been a lucky recipient of what ABWA is all about – learning and growing, both personally and professionally. I absolutely could not have done it without all of you. I still have to shake my head when I think about walking up to that podium and talking to almost 500 people! As I have said

before, I have passed up many opportunities because of my fear of talking in front of people. Because of all of you, I won't have to give in to that fear any longer. (Not that my knees wouldn't still be shaking though !!!)

So, a huge thank you for your smiles, your words of encouragement, your advice and support. It has meant more to me than you can ever know. I conquered a huge fear and obstacle in my life. Now, can someone help me with getting more organized and to stop procrastinating? J

I'm looking forward to the coming year with our great team of leaders!!!

Susan Koch

CHAPTER MEETING – JULY

Note Location and Time...

Next Meeting: July 15th

5:00—6:30 pm

Buttercups & Daisies—631 S. Kansas Avenue

Program: Membership Social \$10 per member / \$30 per guest

Our meeting will be held on the day of our regular meeting but right after work. We will enjoy light food and drink (wine) and make your own piece of jewelry.

Members MUST RSVP to Linda Deines by July 14.



MEMBER NEWS

- ⇒ **Bette Felker** was scheduled for surgery the first week of July. The update we have received is that her surgery went well and she is home. “She's getting along fine, although sitting very “lightly,” but thanks to her great nurse (Maggie Kelley) and her great ABWA support group, she's in good spirits and doing well. Thanks to everyone for thoughts and prayers!” reports Mary Lou. Members will continue to have her in our prayers for a quick recovery.
- ⇒ **Glenda DuBoise** is retiring from AT&T. Her reception is being held on Thursday, July 10th from 4:30—6:30 p.m. at the Ramada Inn.
- ⇒ **Glenda Walters** is moving from active status to sustainer status. Glenda you are never far from our thoughts—keep in touch. We won't let you get too distant.
- ⇒ If you have not paid **chapter dues**, please do so as soon as possible. The Audit Committee will be closing the books for this fiscal year to conduct the annual audit. Dues for 2008-09 will be due in August. Sarah Saenz, treasurer for next year will be sending out notices.
- ⇒ **Thanks** to the members that attending last months meeting that was held at the Outback Steakhouse in support of CASA. It was a huge success and the food was great.
- ⇒ **Members—are you looking to get your message out** or maybe even have a sale or special this month. There are 2 great resources available. You can submit items of interest for a large group of ABWA ladies to Ann Mah at lmah@cox.net who then forwards it to all ABWA members in our community that have signed up to receive the notices. OR you can submit them to me (Shawn Maisberger) the Newsletter chair. I would be happy to put items of interest to our membership in the monthly newsletter.

The Executive Board and members have expressed concern and are continuing to ask members to NOT send an email to All Career Chapter members. Some members are unable to receive email that is not work related but allowed to receive meeting notices from ABWA but that is the limit.

CHAPTER MEMBER BIRTHDAYS AND ANNIVERSARIES

Birthdays

Phyllis Kelly, July 12

Brenda Younger, July 17

Vickie Rogers, July 26

Anniversaries

Betty Barker, July 2, 1984



WASHBURN ABWA STUDENT CHAPTER



The ABWA Student Group was formed on the campus during September 2003 and became a nationally registered chapter in November 2004. The primary purpose of ABWA is a networking avenue for students to link with local, state, and national female leaders and business professionals. The Washburn student ABWA chapter is the fifth student group in the United States to form in the United States.

The student Chapter is on Summer break. We look forward to seeing them in the fall.

Congratulations to the following 2008-09 Career Chapter Officers. They were installed at last month meeting. We are excited about the upcoming year!

President

Deborah Dawkins

Vice President

DeeDee Adams

Treasurer

Sarah Saenz

Corresponding Secretary

Nancy Weigand

Recording Secretary

Michelle Kaberline



MEMBERSHIP CHAPTER DUES

Don't forgot to make your dues payment.

Make check payable to

“Career Chapter ABWA”

Annual Dues: \$223.00

1st Quarter Dues: \$100.75

Due Aug 2007

2nd Quarter Dues: \$ 40.75

Due November 2007

3rd Quarter Dues: \$40.75

Due February 2008

4th Quarter Dues:\$ 40.75

Due May 2008

Mail To:

Sarah Elsen

Friends University

2820 SW Mission Woods Dr.

Topeka, Kansas 66614

National ABWA will forward a statement directly to each member for payment.

National Dues \$75.00

Questions contact Chapter Treasurer, Sarah Elsen at 272.9595 or elsens@friends.edu

**IF YOU HAVEN'T PAID—
CONTACT SARAH
IMMEIDATELY!**

MEMBERSHIP – NETWORKING

In an effort to advertise our memberships strengths and business information, we will list your website here for quick reference by our members.

Nancy Weigand <http://nancymassage.com/index.html>

Deborah Dawkins www.homeinteriors.com/debbdawkins

Deborah Dawkins www.aboveallbooks.com

August Meeting—

Tuesday, August 19th

11:45 a.m.

YWCA

This is our first meeting of the new fiscal year. Our new officers have been sworn in and are ready to begin a new year.

Members should make sure their dues are paid in full for the previous year. Dues will be due for the 2008-09 year. Our new treasurer is Sarah Saenz and she will be happy to help you.

Another great year ahead—see you then.

CAREER CHAPTER'S WEBSITE

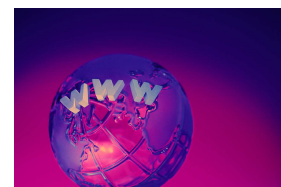


Career Chapter has a new site. Yeah!!

Thanks to Anita Wolgast and the Executive Board for retaining Carol Yoho who has put together a new site for our chapter.

Take a look and Enjoy the site and please visit for updates.

www.abwa-career.org



SCHOLARSHIP—WAYS AND MEANS

The Executive Committee has approved awarding scholarships totaling \$21,000 for the 2008-2009 school year in honor of **Woman of Distinction—Governor Kathleen Sebelius**.

The Committee will award 28 scholarships, ranging from \$1,000 to \$500 each. Of these, 7 are ABWA members and 12 are previous recipients.

Reading the letters and biographical statements that are attached to the scholarship applications makes us realize the importance of our fundraiser and the impact we are making on the lives of these young women. They talk not only the importance of the money we award them, but the value they place on the mentoring they receive from their role models in Career Chapter.

One of our recipients this year is a 27-year-old mother of two children, ages 9 months and 2-1/2 years. Her husband was killed by a drunk driver on his way home from a class at Washburn. She was pregnant with her youngest child at the time.

We are also helping a team of a mother and two daughters who all attend Washburn! Mom started working towards a degree in 1994, and decided in 2006, with her four children growing older, it was time to return to WU to finish. One of the daughters is a member of the Washburn Student Chapter and has received scholarships from Career Chapter in 2005, 2006, 2007, and now again in 2008.

Please know that your hard work in raising scholarship money is deeply appreciated and needed.

DID YOU KNOW....Burglary prevention reminders

The Topeka Police recently reminded citizens of a few tips they can do to help prevent them from becoming burglary victims this summer. One of the simplest things you can do is one of the most effective, and that's securing your residence.

When you leave, lock your door, close and lock windows and shut your garage door. Even you're only leaving to run a quick errand or walk around the block, take the time to secure your home. It takes only moments to become a victim.

Other things you can do include keeping trees/bushes trimmed which helps create a visible line of sight from your doorway to the street. And, it can remove places for criminals to hide.

And, if you're going on vacation this summer, remember to stop newspapers and mail. Ask a neighbor or friend to stop in and check your house while you're away. Using timers on lights can also help give your home a lived in look while you're away.

EXECUTIVE BOARD MINUTES – JULY

ABWA Career Chapter
Executive Board Meeting
Minutes July 1, 2008

Present: Susan Koch, Deborah Dawkins, Sarah Saenz, Linda Deines, Carol Jacobs and Shawn Maisberger.

Susan Koch called the meeting to order.

Minutes: A Motion was made by Deb Dawkins and Seconded by Shawn to approve the June minutes as presented. Motion carried.

Treasurer Report: No report.

Correspondence: No report.

Program: Glenda was unable to make the meeting but Linda reported that as hospitality chair she sent out the invitation to members. Members must RSVP for the July Social that will be held at Buttercups & Daisies on July 15th beginning at 5:00 p.m. Linda is having the Y prepare the food and the costs should be about \$60. Susan and Sarah agreed to organize the drinks for the evening event. They do not believe the costs will exceed \$50/\$60.

Publicity: Nothing new to report. Sarah is working with Diana and the newspaper to make sure that our meeting notices are listed in the newspaper.

Membership: Susan reported on behalf of Judy that a letter was received by Glenda Walters requesting sustainer status. A motion was made by Shawn and seconded by Linda to approve Glenda's move from active to sustainer status. Motion carried. Susan will get with Judy so that she can notify Glenda.

Hospitality: Linda is still working to get our new member Deann a badge. She hopes to have it by the next meeting.

Scholarship: Carol reported that the committee has allocated the \$21,000 approved for scholarships in Governor Kathleen Sebelius' name.

Ways & Means: Anita is scheduling a wrap-up session next week.

New Business: Linda reported that the YWCA meal costs are going up which means that the cost of our membership's meal cost will increase as well. To date the membership pays \$9 for each meal at the Y. The Executive Board will propose members meal costs be increased to \$11 and guest \$15. The information will be presented during the budget presentations.

Susan reported that she has been contacted about email notification of sales or specials. The Board discussed and concluded that they had previously asked members to not send out emails to all members but to send it to Ann Mah who is organizing the email group that sends such notifications and to remind members that they may have their sales or specials displayed in our monthly newsletter as well.

Meeting Adjourned at 12:40 p.m.

Minutes recorded and submitted by
Shawn Maisberger for Nancy Weigand.

TREASURER'S REPORT – JULY

No Report provided.

www.abwa-career.org

**AMERICAN BUSINESS
WOMEN'S ASSOCIATION
CAREER CHAPTER**

Shawn Maisberger

215 SE 7th Street, Room 352

Topeka, Kansas 66603

Phone: 785-368-3896

E-mail: maisberger@topeka.org

Our Mission

To bring together businesswomen of diverse occupations and to provide opportunities for them to help themselves and others to grow personally and professionally through leadership, education, networking support and national recognition.

Become a part of ABWA

A national network of women dedicated to helping each other reach new heights in their careers.

Contact **Judy Thomas**, Membership Chair, to join us at a meeting. You can reach Judy by phone at 785.256.6421 or bertjt@att.net

OFFICER & COMMITTEE CHAIRS CONTACT INFORMATION

President

Susan Koch

susankoch@kawvalleybank.com

Vice President

Deborah Dawkins

dd1605@aol.com

Treasurer

Sarah Elsen

elsens@friends.edu

Recording Secretary

Nancy Weigand

nancyweigand@yahoo.com

Correspondence Secretary

Terry Hobbs

Terry-hobbs@sbcglobal.net

Membership

Judy Thomas

bertjt@att.net

Hospitality

Linda Deines

lindad@ywca.org

Newsletter

Shawn Maisberger

maisberger@topeka.org

Program

Glenda DuBoise

gduboise@sbcglobal.net

Diana Friend

dfriend@mail.tscpl.org

Historian

Sarah Saenz

sarah.saenz@expresspersonnel.com

Education

Carol Jacobs

cjacobs@cbtnks.com

Associates Luncheon

Anita Wolgast

awolgast@cox.net

Publicity

Research

Carol Jacobs

cjacobs@cbtnks.com

Website

Shawn Maisberger

maisberger@topeka.org

Washburn Student Chapter

Michelle Kaberline

beamazed@sbcglobal.net

Ways & Means

Deborah Dawkins

Anita Wolgast

